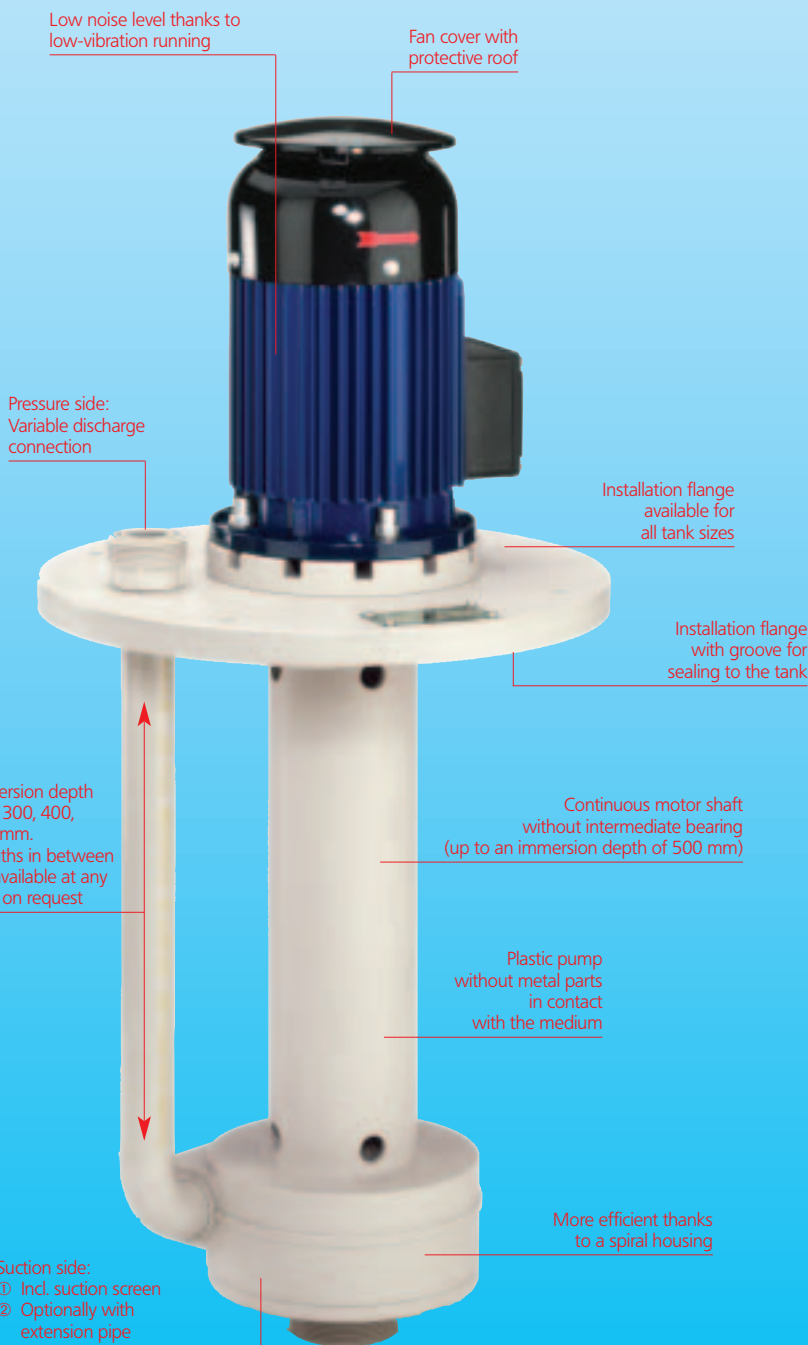


# VERTICAL CENTRIFUGAL IMMERSION PUMP

## Series RT3

safe to run dry without shaft  
intermediate bearing up to an  
immersion depth of 500 mm



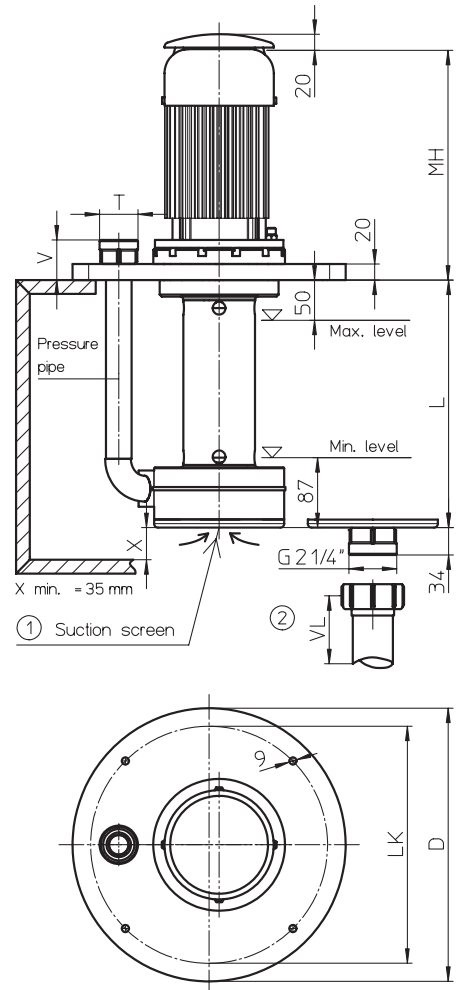
For piping in the tank, the pump is also available without a pressure pipe.



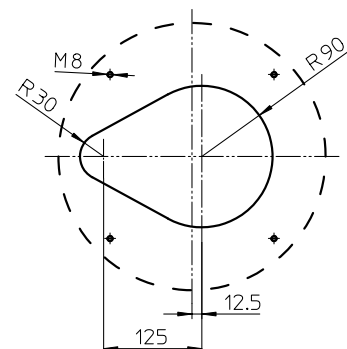
### Note

Please refer to the detailed technical information on Pages 5 to 11, which applies to all modules.

### Dimensions in mm



### Installation opening



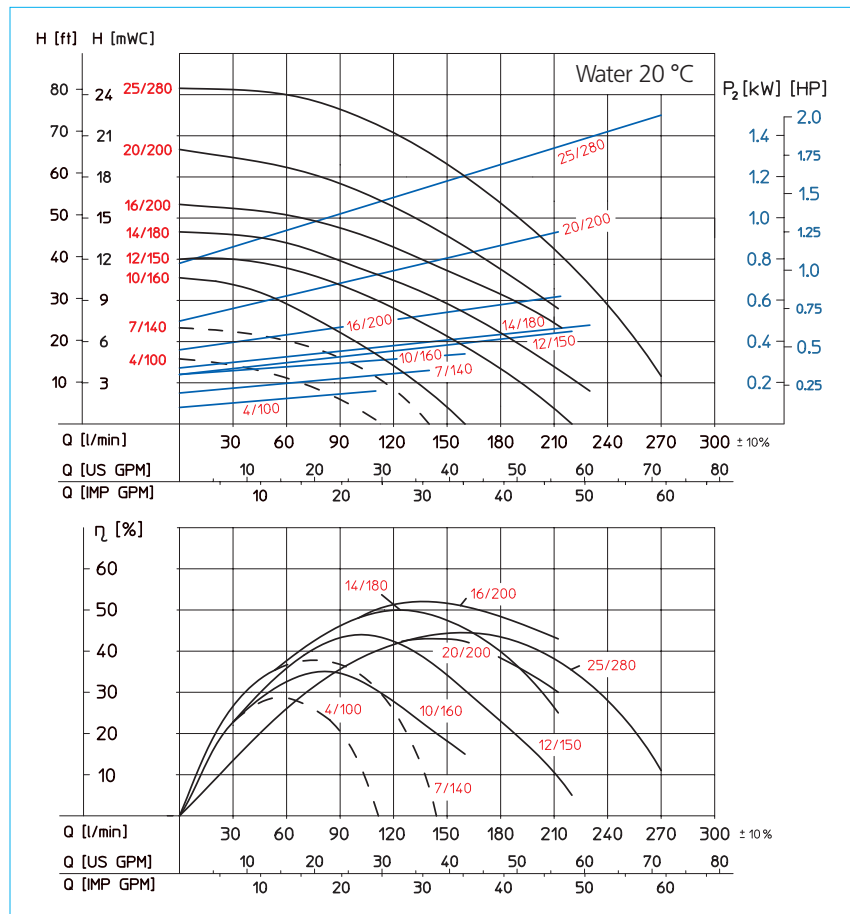
**Precise documentation ensures planning reliability for your construction**

On the basis of exact performance data, you can choose the exact pump that you need for your plants.

The Renner design and production principle also allows individual solutions to be realised.

**Accessories**

- Extension pipe VL max. = 500 mm
- Connecting cable completely wired with plug



Size	4/100	7/140	10/160	12/150	14/180	16/200	20/200	25/280	
<b>Hydraulic data</b>									
Max. delivery rate [l/min / US GPM]	100 / 26.4	140 / 37	160 / 42.3	220 / 58.1	230 / 60.8	210 / 55.5	210 / 55.5	280 / 74	
Max. delivery head [mWC / ft.]	5 / 16.4'	7 / 23'	10 / 32.8'	12 / 39.4'	14 / 45.9'	16 / 52.5'	20 / 65.6'	25 / 82'	
<b>Motor data</b>									
Motor power P <sub>2</sub> * at 50 Hz [kW / HP]	0.25 / 0.35	-	0.37 / 0.5	0.55 / 0.75	0.55 / 0.75	0.65 / 1	1.1 / 1.5	-	
Motor power P <sub>2</sub> * at 60 Hz [kW / HP]	0.3 / 0.4	0.3 / 0.4	0.44 / 0.6	0.65 / 1	0.65 / 1	0.7 / 1	1.3 / 1.75	1.8 / 2.5	
Speed at 50 Hz [rpm]	1450	-	2850	2850	2850	2850	2850	-	
Speed at 60 Hz [rpm]	1750	1750	3450	3450	3450	3450	3450	3450	
Voltage	230 V 1-ph. or 230/400 V 3-ph. **								
Protection type	IP55 ***								
<b>Dimensions</b>									
Installation height [MH] [mm / inch]	292 / 11.5"	292 / 11.5"	276 / 10.9"	292 / 11.5"	292 / 11.5"	292 / 11.5"	310 / 12.2"	310 / 12.2"	
Connections	Suction side ①	Suction screen	Suction screen	Suction screen	Suction screen	Suction screen	Suction screen	Suction screen	
	Suction side ②	G 2 1/4	G 2 1/4	G 2 1/4	G 2 1/4	G 2 1/4	G 2 1/4	G 2 1/4	
	Pressure side [T]	G 2 1/4	G 2 1/4	G 1 1/2	G 1 1/2	G 1 1/2	G 1 1/2	G 2 1/4	

Immersion depth L [mm / inch]	200 / 7.87"	300 / 11.8"	400 / 15.7"	500 / 19.7"
Discharge connection height [V] [mm / inch]	Standard = 50 / 1.97" alternatively with other dimensions, rotatable, with angle 90° etc.			
Installation flange [D], [LK] [mm / inch]	Ø 340 / 13.4", LK 295 / 11.6" other dimensions always possible, also available as a rectangular flange			

\* All pumps are also available with smaller impeller diameters for liquids with higher specific gravities although this reduces the delivery rates and delivery heads. If necessary, please consult us.  
\*\* All international voltages and frequencies are available.  
\*\*\* Other protection types on request.

Exclusive North American Sales  
& Service By:



More than just pumps

**FLUX PUMPS CORPORATION**

300 Townpark Drive, Suite 130  
Kennesaw, GA 30144, USA  
Phone 800-367-3589  
info@fluxpumpsusa.com  
www.fluxpumpsusa.com